



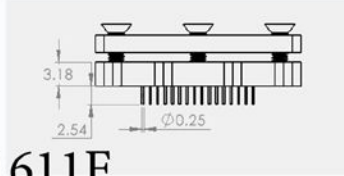
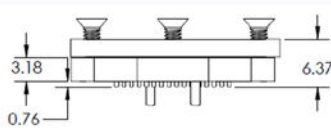
BL/LL Series

Ball Grid Array/Land Grid Array

FOOTPRINT COMPATIBLE Surface Mount or Through-hole
1.27mm, 1.00mm, Pitch

SMT

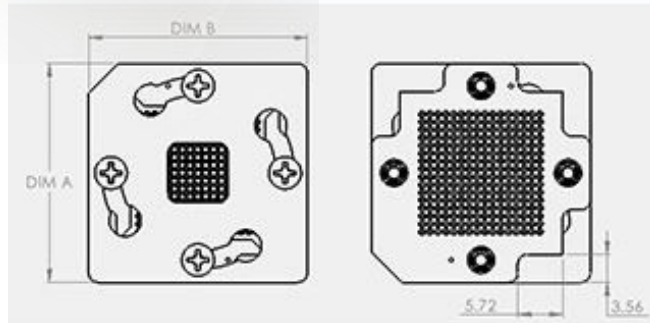
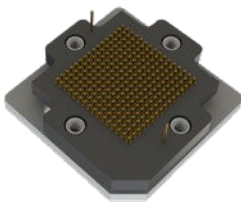
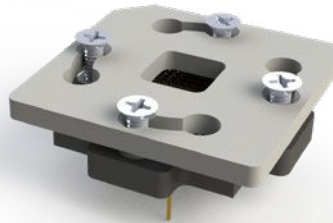
THRU-HOLE



HOW TO ORDER:

BL256SA1611F

Series Pin Count
S= Surface Mount
T=Thru-Hole
F= FR4
X=CUSTOM
Footprint Code
A=Alignment Pins



Introducing the BL/LL Socket Series, meticulously designed for 1.00mm, and 1.27mm pitch. These compact sockets seamlessly integrate with your existing board layout, making them an indispensable tool for densely populated circuits. Say goodbye to the hassle of mismatched components and hello to a smoother, more efficient prototyping process.

Outcome: Imagine effortlessly inserting and removing your BGA or LGA chips, streamlining your system prototyping like never before. The BL/LL Series is not just about saving space; it's about saving time and reducing the risk of damage to your expensive ASIC or FPGA designs. This game-changer series offers an unmatched blend of durability, precision, and convenience.

FEATURES & BENEFITS:

- Fits Existing BGA footprint
- Ideal for Development applications
- Fast Lead-times
- Cost Effective
- Custom Footprints
- Low Profile

Electrical Performance:

- Max Voltage: 75 VAC / 100 VDC
- Max Current: 1 AMP
- Contact Resistance: .01 Ω Max @ .01 AMPS/5VDC
- Insulation Resistance @ 500VDC: 10k MegOhms Min.
- Capacitance: 1pf Max.
- Self Inductance: 2 nH Max

Thermal Performance:

- Operating Temperature: -55° to 140°
- Resistance to Soldering Heat: 10 Seconds @ 288°C
- Flammability Rating: UL94V-0

Materials:

- Contacts: Brass Alloy C36000 per ASTM-B16, 1/2 Hard
- Insulator: FR4-G10

The following are standard socket sizes based on the body width of your device.

Body (mm)	Dim A	Dim B
09x09	18.75	18.75
10x10	19.75	19.75
11x11	20.75	20.75
13x13	22.75	22.75
14x14	23.75	23.75
15x15	24.75	24.75
16x16	25.75	25.75
17x17	26.75	26.75
19x19	28.75	28.75
20x20	29.75	29.75
21x21	30.75	30.75
22x22	31.75	31.75
23x23	32.75	32.75
24x24	33.75	33.75
25x25	34.75	34.75

Notes:

- For Price and Lead-time, please call: 209-839-0200 or email to sales@adapt-plus.com
- Please provide IC package drawing with quote requests.
- The BL series is also commonly used with FBS Series (female BGA Adapter), and PA Series (probe Adapter).
- All Items are built to order typically in 2-4 weeks.

