

2

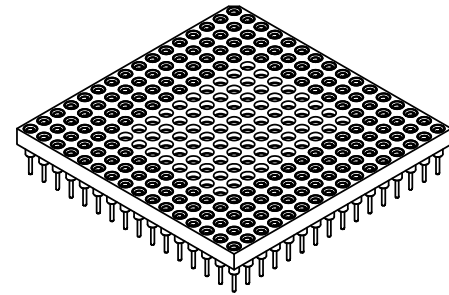
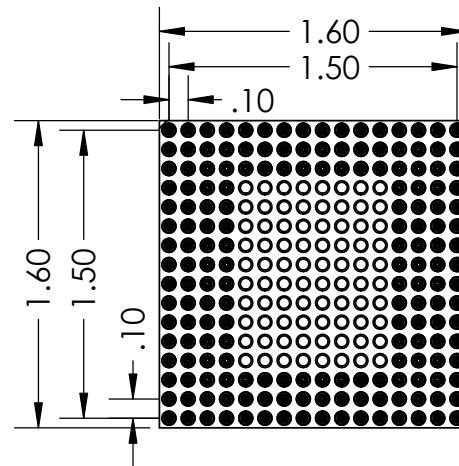
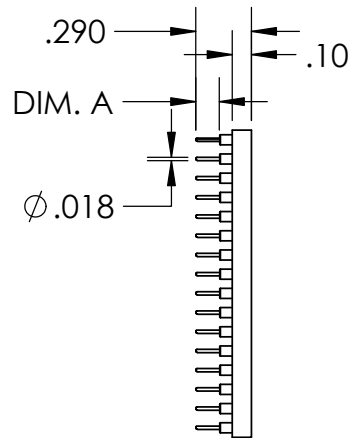
1

PART NUMBER	DIM. A
PS176B-0131GG-P	.125"
PS176B-0132GG-P	.180"
PS176B-0133GG-P	.215"

REVISIONS		
REV.	DESCRIPTION	DATE
A	INITIAL RELEASE	9/19/2020

B

B



A

A


NOTE:

- INSULATOR MATERIAL: GLASS FILLED POLYESTER
- FLAMABILITY RATING: UL94V-0
- OPERATING TEMP: -55C TO +125C
- ACCEPTS -.015-.021 DIAMETER PIN
- SHELL MATERIAL: BRASS ALLOY C36000, 1/2 HARD
- SHELL PLATING 10µ MIN. OVER NICKEL, 100µ MIN
- CONTACT MATERIAL: BeCu
- CONTACT PLATING: 10µ MIN. OVER NICKEL, 100µ MIN

PROPRIETARY AND CONFIDENTIAL

THE INFORMATION CONTAINED IN THIS DRAWING IS THE SOLE PROPERTY OF ADAPTERS-PLUS INC. ANY REPRODUCTION IN PART OR AS A WHOLE WITHOUT THE WRITTEN PERMISSION OF ADAPTERS-PLUS IS PROHIBITED.

UNLESS OTHERWISE SPECIFIED:	NAME	DATE
DIMENSIONS ARE IN INCHES	DRAWN	AM 09/19/20
TOLERANCES:	CHECKED	SB 09/19/20
FRACTIONAL ± .1	ENG APPR.	
ANGULAR: MACH ± .1	MFG APPR.	
TWO PLACE DECIMAL ± .01	Q.A.	
THREE PLACE DECIMAL ± .005	COMMENTS:	
INTERPRET GEOMETRIC TOLERANCING PER:		
MATERIAL		
FINISH		
DO NOT SCALE DRAWING		

 <b>Adapters-Plus Inc.</b> Ph: 209-839-0200 web: www.adapt-plus.com		
TITLE:		
<b>176 PGA SOCKET 16X16 GRID</b>		
SIZE	DWG. NO.	REV
<b>A</b>	PS176B-013XGG-P	<b>A</b>
SCALE: 1:1	WEIGHT:	SHEET 1 OF 1

2

1