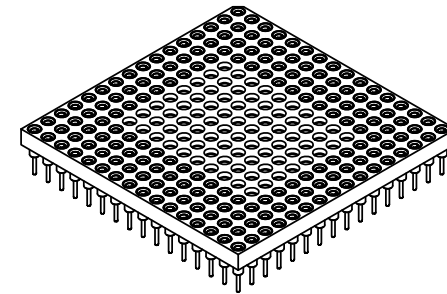
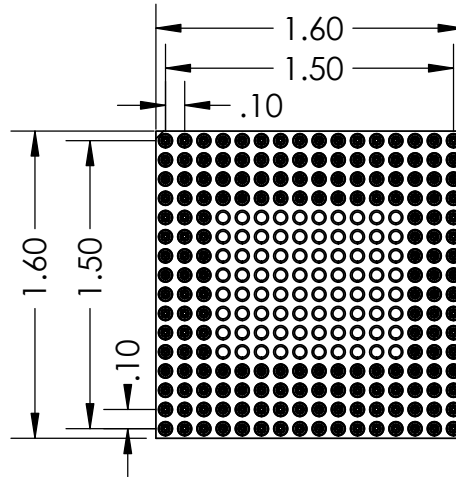
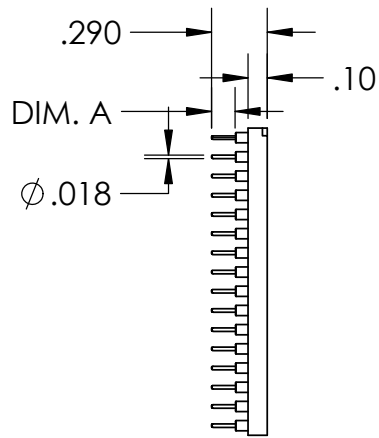


2

1

PART NUMBER	DIM. A
PS176A-0131GG-P	.125
PS176A-0132GG-P	.180"
PS176A-0133GG-P	.215"

REVISIONS		
REV.	DESCRIPTION	DATE
A	INITIAL RELEASE	9/19/2020



B


B

A

A

- NOTE:
- INSULATOR MATERIAL: GLASS FILLED POLYESTER
 - FLAMABILITY RATING: UL94V-0
 - OPERATING TEMP: -55C TO +125C
 - ACCEPTS -.015-.021 DIAMETER PIN
 - SHELL MATERIAL: BRASS ALLOY C36000, 1/2 HARD
 - SHELL PLATING 10µ MIN. OVER NICKEL, 100µ MIN
 - CONTACT MATERIAL: BeCu
 - CONTACT PLATING: 10µ MIN. OVER NICKEL, 100µ MIN

PROPRIETARY AND CONFIDENTIAL
 THE INFORMATION CONTAINED IN THIS DRAWING IS THE SOLE PROPERTY OF ADAPTERS-PLUS INC. ANY REPRODUCTION IN PART OR AS A WHOLE WITHOUT THE WRITTEN PERMISSION OF ADAPTERS-PLUS IS PROHIBITED.

UNLESS OTHERWISE SPECIFIED:		NAME	DATE	 Adapters-Plus Inc. Ph: 209-839-0200 web: www.adapt-plus.com	
DIMENSIONS ARE IN INCHES		DRAWN	AM		09/19/20
TOLERANCES:		CHECKED	SB		09/19/20
FRACTIONAL ± .1		ENG APPR.			
ANGULAR: MACH ± .1		MFG APPR.			
TWO PLACE DECIMAL ± .01		Q.A.			
THREE PLACE DECIMAL ± .005		COMMENTS:			
INTERPRET GEOMETRIC TOLERANCING PER:				TITLE:	
MATERIAL				176 PGA SOCKET 16X16 GRID	
FINISH				SIZE	
DO NOT SCALE DRAWING				DWG. NO. PS176A-013XGG-P	
				REV A	
				SCALE: 1:1	
				WEIGHT:	
				SHEET 1 OF 1	

2

1