

2

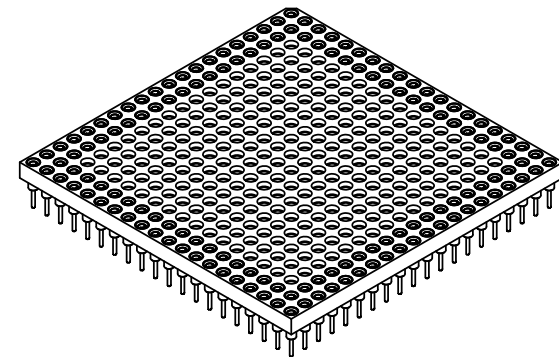
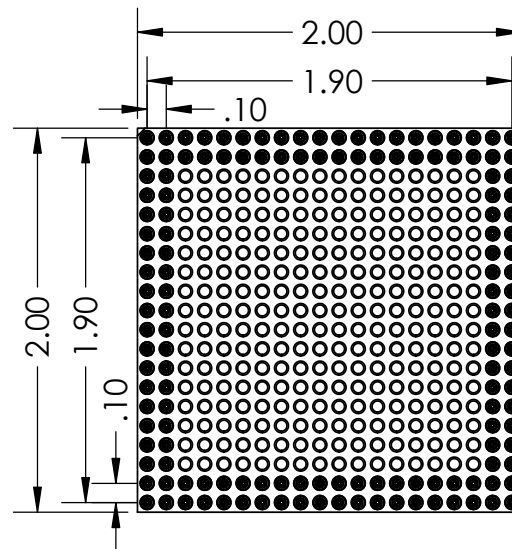
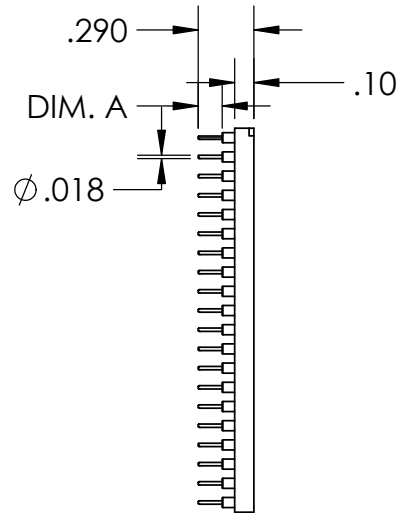
1

PART NUMBER	DIM. A
PS144D-0131GG-P	.125"
PS144D-0132GG-P	.180"
PS144D-0133GG-P	.215

REVISIONS		
REV.	DESCRIPTION	DATE
A	INITIAL RELEASE	9/18/2020

B

B



A


A

NOTE:

- INSULATOR MATERIAL: GLASS FILLED POLYESTER
- FLAMABILITY RATING: UL94V-0
- OPERATING TEMP: -55C TO +125C
- ACCEPTS -.015-.021 DIAMETER PIN
- SHELL MATERIAL: BRASS ALLOY C36000, 1/2 HARD
- SHELL PLATING 10µ MIN. OVER NICKEL, 100µ MIN
- CONTACT MATERIAL: BeCu
- CONTACT PLATING: 10µ MIN. OVER NICKEL, 100µ MIN

PROPRIETARY AND CONFIDENTIAL

THE INFORMATION CONTAINED IN THIS DRAWING IS THE SOLE PROPERTY OF ADAPTERS-PLUS INC. ANY REPRODUCTION IN PART OR AS A WHOLE WITHOUT THE WRITTEN PERMISSION OF ADAPTERS-PLUS IS PROHIBITED.

UNLESS OTHERWISE SPECIFIED:		NAME	DATE	 Adapters-Plus Inc. Ph: 209-839-0200 web: www.adapt-plus.com
DIMENSIONS ARE IN INCHES TOLERANCES: FRACTIONAL ± .1 ANGULAR: MACH ± .1 TWO PLACE DECIMAL ± .01 THREE PLACE DECIMAL ± .005		DRAWN	AM	
INTERPRET GEOMETRIC TOLERANCING PER: MATERIAL FINISH DO NOT SCALE DRAWING		CHECKED	SB	09/18/20
		ENG APPR.		
		MFG APPR.		
		Q.A.		
		COMMENTS:		TITLE:
				144 PGA SOCKET 20X20 GRID ARRAY
SIZE	DWG. NO.			REV
<b>A</b>	PS144D-013XGG-P			<b>A</b>
SCALE: 1:1		WEIGHT:		SHEET 1 OF 1

2

1