

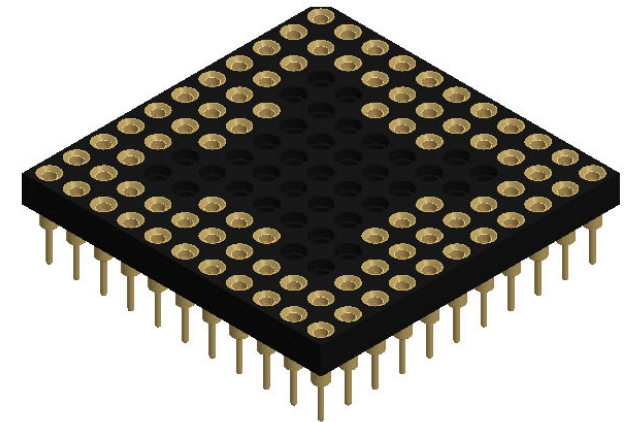
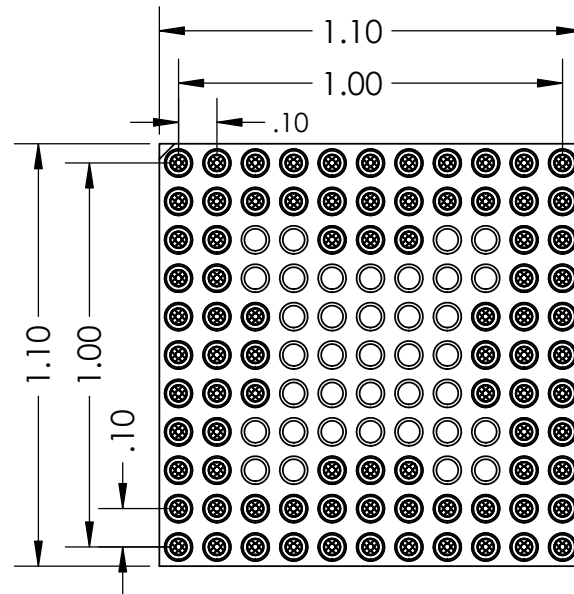
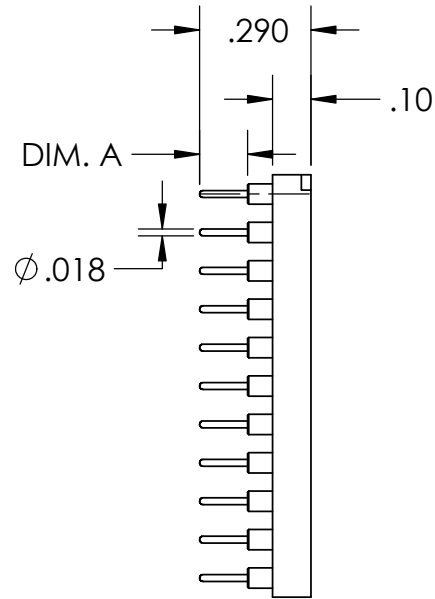
2

1

PART NUMBER	DIM. A
PS084B-0131GG-P	.125"
PS084B-0132GG-P	.180"
PS084B-0133GG-P	.215"

REVISIONS		
REV.	DESCRIPTION	DATE
A	INITIAL RELEASE	9/16/2020

B



B

A

- NOTE:
1. INSULATOR MATERIAL: GLASS FILLED POLYESTER
  2. FLAMABILITY RATING: UL94V-0
  3. OPERATING TEMP: -55C TO +120C
  4. ACCEPTS -.015-.021 DIAMETER PIN
  5. SHELL MATERIAL: BRASS ALLOY C36000, 1/2 HARD
  6. SHELL PLATING 10µ MIN. OVER NICKEL, 100µ MIN
  7. CONTACT MATERIAL: BeCu
  8. CONTACT PLATING: 10µ MIN. OVER NICKEL, 100µ MIN

**PROPRIETARY AND CONFIDENTIAL**  
 THE INFORMATION CONTAINED IN THIS DRAWING IS THE SOLE PROPERTY OF ADAPTERS-PLUS INC. ANY REPRODUCTION IN PART OR AS A WHOLE WITHOUT THE WRITTEN PERMISSION OF ADAPTERS-PLUS IS PROHIBITED.

UNLESS OTHERWISE SPECIFIED:		NAME	DATE
DIMENSIONS ARE IN INCHES		DRAWN	AM
TOLERANCES:		CHECKED	SB
FRACTIONAL ± .1		ENG APPR.	
ANGULAR: MACH ± .1		MFG APPR.	
TWO PLACE DECIMAL ± .01		Q.A.	
THREE PLACE DECIMAL ± .005		COMMENTS:	
INTERPRET GEOMETRIC TOLERANCING PER:	MATERIAL		
	FINISH		
DO NOT SCALE DRAWING			



Adapters-Plus Inc.  
 Ph: 209-839-0200  
 web: www.adapt-plus.com

TITLE:

84 PGA SOCKET  
 11X11 GRID

SIZE	DWG. NO.	REV
<b>A</b>	PS084B-013XGG-P	<b>A</b>
SCALE: 2:1	WEIGHT:	SHEET 1 OF 1

A

2

1